



Bee in the City



Created in Manchester by:



MANCHESTER
CITY COUNCIL

In support of:



'Bee in the City'

Learning Programme

- Information Briefing 26th March 4 – 5.30pm

Ben Reed

Head of Creative Development for Wild in Art

Laura McGregor (job share with Jana Kennedy)

Learning Programme Coordinator for Bee in the City



Welcome

Thanks for joining us here today and thanks to Central Library for having us.

Today we hope to:

- Share ideas, information and resources to inspire your Bee in the City journey
- Introduce you to our key partners, who'll share their activities and plans for the project
- Talk you through timelines and deadlines
- Give advice on how to work with the sculptures and materials to use
- Answer any questions and give you an opportunity to network with other schools and teaching colleagues



Bee in the City

- **One of the most ambitious public art projects ever seen in the region**
- **Summer 2018 will see a trail of super-sized 3D bee sculptures transform the public spaces of the city**
- **Uniquely designed by regional artists**
- **Opportunities for businesses / organisations, community groups and schools to be involved**
- **After the trail most of the sculptures go to auction, with proceeds going to We Love MCR Charity**



The numbers so far?

- **48 sponsors confirmed – 70 anticipated by mid April.**
- **8 community bees left from 15 available**
- **Up to 95 super sized bees on the trail**
- **111 school / youth groups signed up to Learning Programme – 125 anticipated by end of March**



Bee Sponsors include









Bees in the City

Queen Bee
Artist: Judith Gorman

Interested in
YOUR LOGO HERE

beesinthe.city.co.uk
#beesinthecity

Project timeline and milestones

January - March

- Schools apply to sign up to the programme



March - April

- Inspiration briefings
- Schools receive Learning resource packs and start planning Bee in the City project
- CPD training and Bee keeper sessions - if ordered



WC 9 April

- Sculpture to be collected/delivered
details to be confirmed



18 May

- Schools deadline for return of design submission



April - 18 June

- Sculpture to be decorated and completed in schools
- Sculpture to be delivered/collected, ready for photographing for web/app/trail map etc.



Early July

- Sculptures delivered to trail location
- Launch event
- Hive of creativity festival



Early July - mid September

- Trail live



Mid September

- Sculpture returned to schools/groups



September/October

- Evaluation



Timeline

- **From w/c April 9th:** Sculptures and learning packs collected/delivered to schools
- **w/c 23rd April:** Training delivered by Manchester School of Writing
- **18th May:** Design submission deadline
- **18th June:** Sculptures to be completed
- **w/c 18th Jun:** Sculptures will be collected / dropped off and photographed
- **Early July:** Sculptures delivered to venues and
- **4th July:** Hive of Creativity Festival launch event to take place
- **w/c 9th July:** Trail of Learning Programme bees live
- **w/c 23rd July - mid September:** Trail of sponsored bees live
- **Mid to late Sep:** Sculptures delivered back to schools
- **Oct/Nov:** Evaluation and participation awards



Manchester Central

Manchester Central
A Place in the Sun Live
A world of overseas property under one roof
2 for £15
www.aplaceinthesun.com

REUNION ENCOUNTER
REVIVAL ISN'T IN THE PAST.

WE ARE LIVING FOR SOMETHING GREATER.

Why a Bee?

The worker bee is one of the best known symbols of Manchester. Unique to the city, it has been an iconic part of Manchester's coat of arms since 1842 and has become synonymous with Manchester's indefatigable spirit of enterprise and industriousness.



Bee in the City sculpture designed by Chris Wilkinson, Wild in Art Creative Director.

A **worker bee** is a member of the honey bee species and is not to be confused with the larger, more rotund bumble bee. The phrase 'busy as a bee' originated from the relentlessly energetic activities of the super-charged worker bee.

Celebratory storyteller

The city's heraldic worker bee tells a good story because its journey has been colourful, historic, lively, proud and uniquely Mancunian.



Explorer

The bee is dynamic, active and always on the move – and will encourage residents and tourists to get busy and find all the sculptures.

Conservation

The beleaguered bee population is struggling globally due to changes to the environment and to the bees' habitat. The trail and the associated learning programme will bring to life these important environmental and conservation messages.

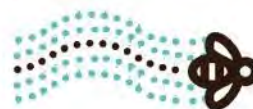


On trend

In response to the environmental challenges facing bees, bee-keeping and natural planting are becoming more popular. Bees have long-featured in design, architecture and art as strong, diligent symbols of regeneration and of nature at its most productive.

Super properties

The super-powered 'liquid gold' that bees produce boasts several medicinal benefits that have been documented since ancient times.

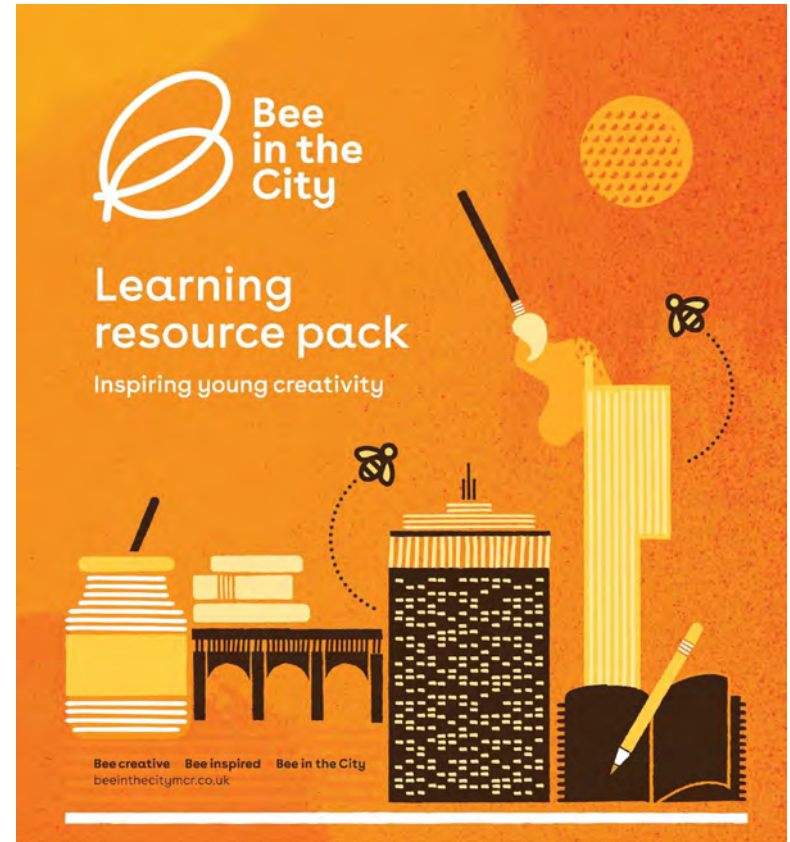


Respected

The virtues of bees have been extolled throughout the ages including in philosophy, science, art and literature.

The Resource Pack

- This pack is your gateway to Bee in the City. It has all the information you need to start planning pupils' adventures with the bees.
- Packed with cross-curricular resources to inspire lessons and activities.
- Design templates so your whole school can get involved.
- Advice on getting the most out of media engagement and suggested fundraising activities.
- Contact details to stay in touch.



Created in Manchester by:



MANCHESTER
CITY COUNCIL

In support of:



The Lord Mayor of Manchester's Charity Appeal Trust, registered charity number 1066972



The Resource Pack continued

Big thanks to our pack's guest editors

- Lessons plans, facts, book lists and resources brought to life.
- Bee a Reader initiative as part of Read Manchester
- Learn more about bees and how they are facing challenges
- Bee a Historian – find out the city's links to the worker bee
- Link Bee in the City to Arts Award or use it to demonstrate your commitment to Arts Mark



seven stories
National Centre for Children's Books



Whole school fun...

Small targeted group versus whole school?

Although the emphasis of this pack is on group participation, you will know the dynamic that will work best for your school.

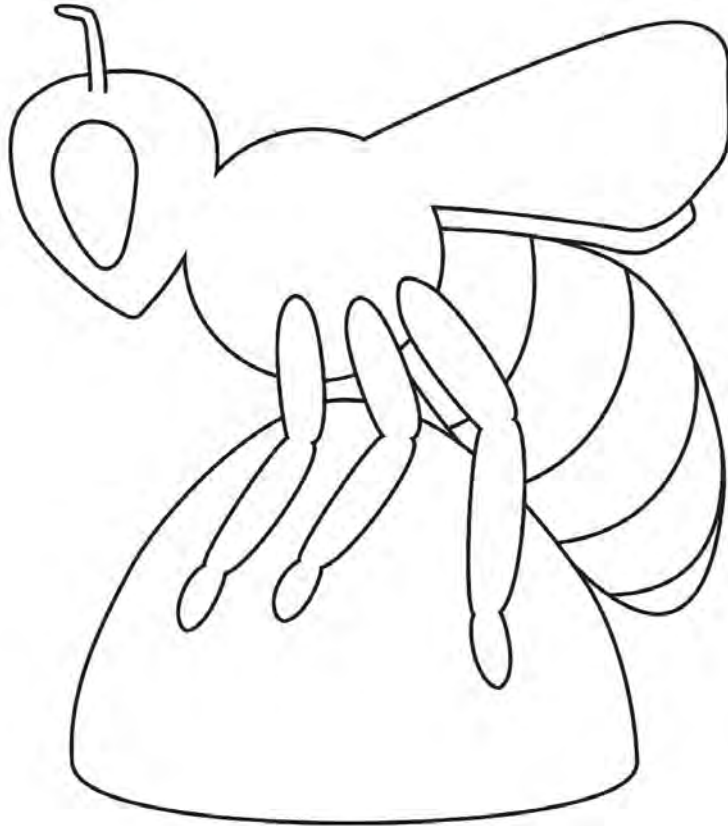
For example, you may decide to work with a targeted group as your core design and realisation team, made up of a particular year, members of the art club, pupil premium students or those recognised as “gifted and talented”.

But for the maximum effect and benefit to be achieved, we do encourage an element of whole school activity.

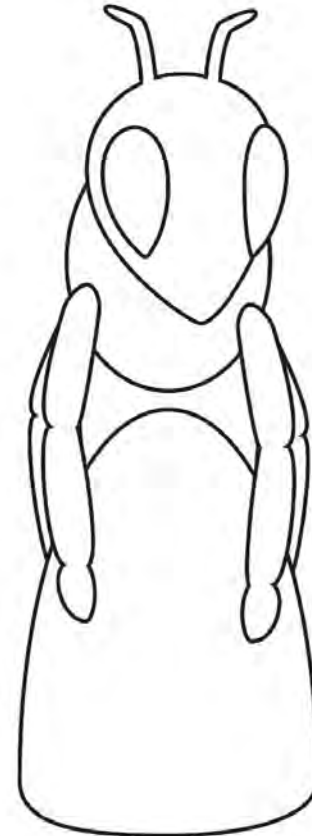


The Resource Pack: design template

Bee sculpture - side view



Bee sculpture - front view



Cross Curricular Activities


Topic web 1 -
cross-curricular
links




Decorating your Bee sculpture & taking part in the Bee in the City trail

A real-world creative challenge with a shared community outcome

Bee busy: host your own working bee

- 
- Working together on your sculpture
 - Throwing a launch party
 - Planting a bee-friendly garden
 - Setting up a bee-inspired co-operative
 - Hosting a 'quilting bee'
 - Folding origami
 - Hosting a 'spelling bee'
 - Running a charity auction

Bee an investigator

- 
- Finding out about bees and beekeeping
 - *The Great British Bee Count*
 - Investigating hexagons
 - Honey taste tests
 - Comparative measurements
 - Hexagonal thinking

Bee creative

- 
- Creating a story hive
 - Designing a hive
 - Bee-ing numerical
 - Cooking up a honey storm
 - Creating a Bee trail
 - Compiling a sensory map
 - *The Flight of the Bumblebee* by Rimsky-Korsakov
 - How the Bee Became: Creation Myths
 - Editing *The Daily Buzz*
 - The 'bee-loud glade': a poem by WB Yeats

Topic web 2 - individual subjects

PSHE and Citizenship

- Working together on a bee-inspired enterprise
- Hold a Bee in the City celebration for your community
- Support a local community beekeeping initiative
- Hexagonal learning to support in-depth exploration of a challenging topic

Computing

- Design and produce a booklet to accompany your Bee in the City trail
- Produce promotional materials and a souvenir booklet for a school exhibition documenting the design and creation of your bee sculpture
- Collate your school's bee sightings for the Great British Bee Count

Music

- Rimsky-Korsakov's *Flight of the Bumble Bee*
- Nuno Bettencourt's homage on electric guitar
- Liberace's boogie-woogie version
- A swing-jazz version in Disney's *Melody Time*
- The Peanut Butter Conspiracy's psychedelic spoof

Languages

- Create a foreign-language guide for your Bee in the City trail
- How do bees communicate? Body language, vibrations and the 'waggle dance'
- Du Iz Tak? A book exploring an imaginary insect language

English

- Write articles, reports and guidebooks to document and share your Bee in the City project and the sculpture trail
- Write a Ted Hughes-inspired bee creation myth or Aesop-style fable
- Hold a 'spelling bee'
- Turn a picturebook into an Indian-inspired performance with *The Honey Hunter*
- Explore the idea of Arcadia with WB Yeats' poem *The Lake Isle of Innisfree*
- Write and make mini-books to create a 'Story Hive'

Decorating your Bee sculpture & taking part in the Bee in the City trail

A real-world creative challenge with a shared community outcome

Art, Design and DT

- Design and decorate your Bee in the City sculpture
- Bees as symbols in Manchester and beyond
- Different shapes and materials for hives - what, why, how, which works best?
- Origami hexagons - what can you design and build?
- Grandma Moses and the quilting bee: design and sew a quilt
- Wolfgang Buttress's interactive Hive sculpture at Kew
- Art History: Childe's golden bees and Napoleon's court; medieval manuscripts about beekeeping; folk-art carved hives

Maths

- Hexagonal 2-D and 3-D geometry
- Pattern making - hexagonal tessellations and number sequences
- Statistics and number-crunching using data from The Great British Bee Count
- Bees understand the concept of zero - investigating zero and its use

Science

- Observe, identify, record and report bee sightings
- Close up: bees through the microscope
- How do bees fly? Flight investigations
- Taste-testing honey
- Planting trees and flowers to help bees and the environment

History

- Research and create your own historical 'bee-inspired' trail through Manchester
- Beekeeping in medieval manuscripts
- The origins of the co-operative movement in Rochdale and Manchester
- Childe's golden bees and the Emperor Napoleon

Geography

- How do bees navigate? Compass directions, the sun and the Earth's magnetic field
- What would a bee see flying above your school? Using local maps
- Beekeeping across the world - traditional vs modern industry
- The Honey Hunter and the Bay of Bengal

Materials

We've listened to feedback from past participants and have put together a short information video about how to work with your sculpture, including advice on planning, pupil engagement, paint materials and varnishing



Artist Jenny Leonard has created short video tutorial. This is available to watch online now and share with your pupils too

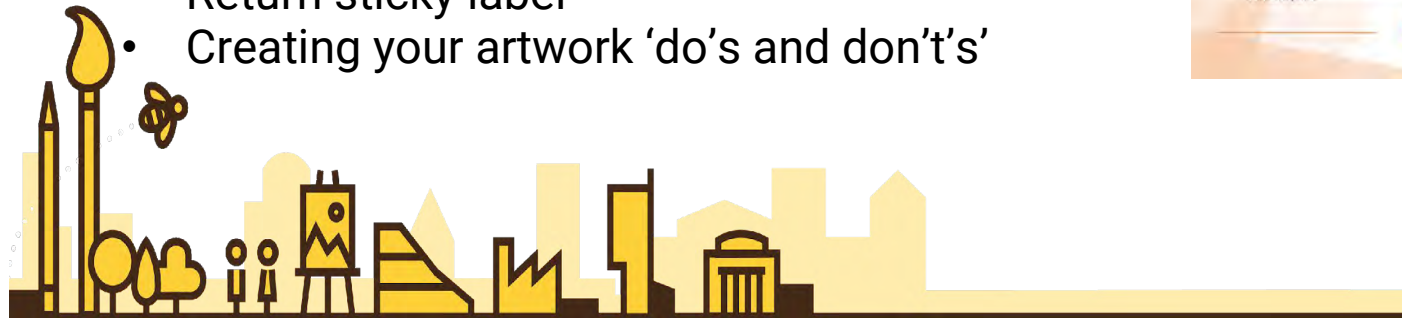


Handy Do's and Dont's

We have also provided an easy and accessible, 1-page guide to creating your artwork - just in case you don't have time to read the full learning pack.

This will be attached to the delivery note and return label, the delivery driver will ask your reception to sign on receipt. Do let us know if you don't receive any of the following;

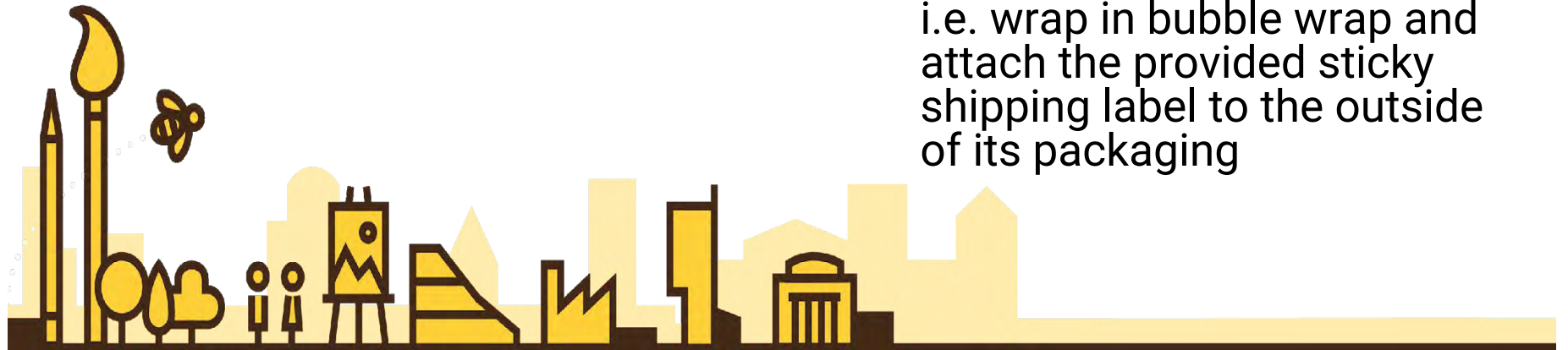
- Bee sculpture
- Tote bag containing the resource pack
- Duplicate delivery note – to be signed on receipt – 1 for you and the other for us
- Return sticky label
- Creating your artwork 'do's and don't's'



Labelling and Packaging



- When you receive your bee it will have an address label with a sculpture reference on it. Please write this number and your school's name on the base immediately, so there can be no mix ups or confusions with its identity
- When your bee is ready for collection/return, please package safely and securely, i.e. wrap in bubble wrap and attach the provided sticky shipping label to the outside of its packaging



Design Submissions & Evaluation Forms

To make it easier and more automated you will be able to complete both your Design Submission & Evaluation Forms online via The Big Sleuth Website –

<http://www.beeinthecitymcr.co.uk/>

To keep you updated on news, updates, deadlines and opportunities, we will send you regular newsletters to the contact/s you included on your order form. Please check your inboxes, junk and spam filters, to make sure you are receiving these. If you're any in doubt, contact us on

learning@beeinthecitymcr.co.uk





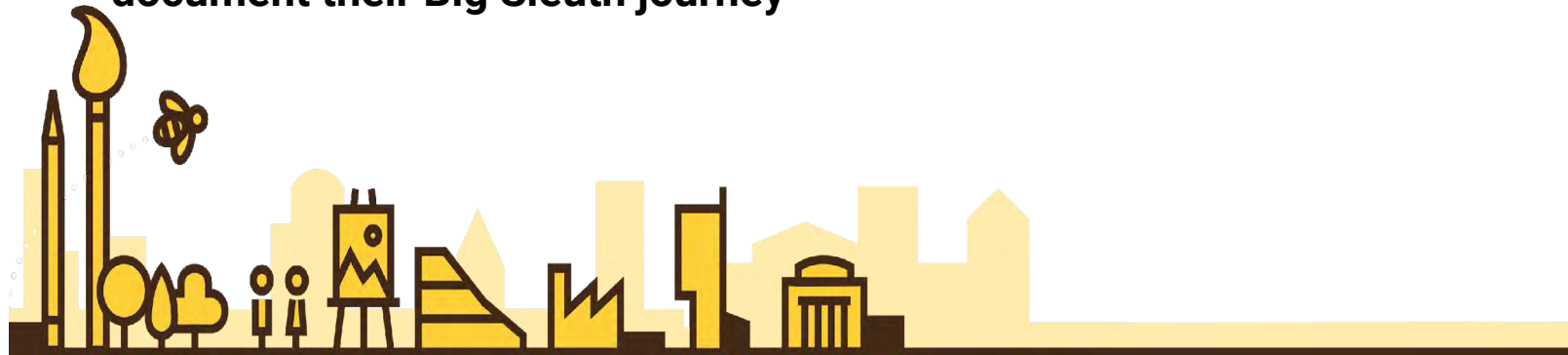
Linking to

If you have Arts Award trained staff you can easily map this project to either the Discover and Explore Levels

Discover - example

- **Part A – Take part in the Arts** – Explore and teach your pupils a new creative skill
- **Part B – Experience artists work** – get inspired by famous artists and find out all about them and their work
- **Part C – Share and record your Discovery** – Create your bear cub, share through assembly and trail map, record in our free arts logs.

N.B: Workbooks for your students to use/complete will be available to download from The Big Sleuth Website in the next 2 weeks – these are free and not exclusive to Arts Award schools. They can be duplicated as a journal for any pupil to use to document their Big Sleuth journey



Training

The Manchester Writing School at MMU

- Staff CPD Training

- Includes a full day Creative Writing Training Workshop Session with The Manchester Writing School, including lunch and refreshments.
- Date for training will be confirmed on Thursday and will be hosted at MMU

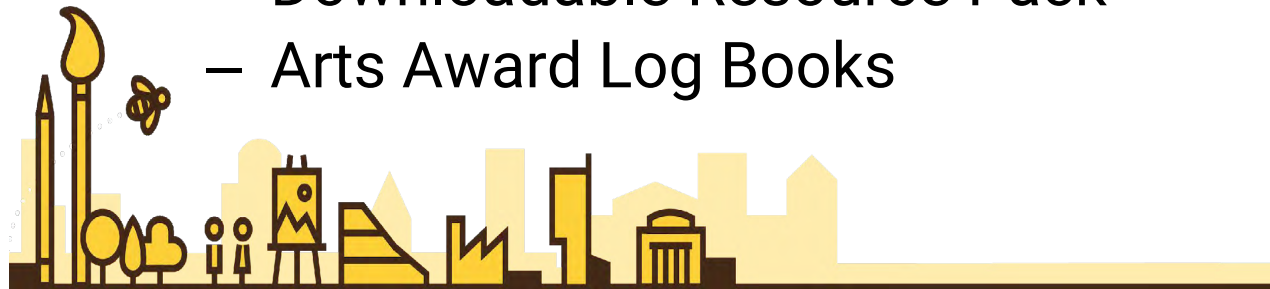


Manchester
Metropolitan
University




Promoting Involvement





- Shout about your project – but only sneak peeks of decorated bees! Let's surprise trail goers with your creations
- Tell us about your plans – we want to promote your activities, fundraising and artwork too
- Website portal for participants to access & download collateral in coming days
- Content includes:
 - Logos and Guidelines
 - Downloadable Resource Pack
 - Arts Award Log Books




Online Portal

Login - Bee in the City 2018 : Bee in the City 2018

[Learn more about Wild In Art](#)  [Other Wild In Art Events](#)

 #beinthecity   



[Home](#) [Art trail](#) [Bee involved](#) [Events](#) [News](#) [Get in touch](#)

Login

Username or E-mail

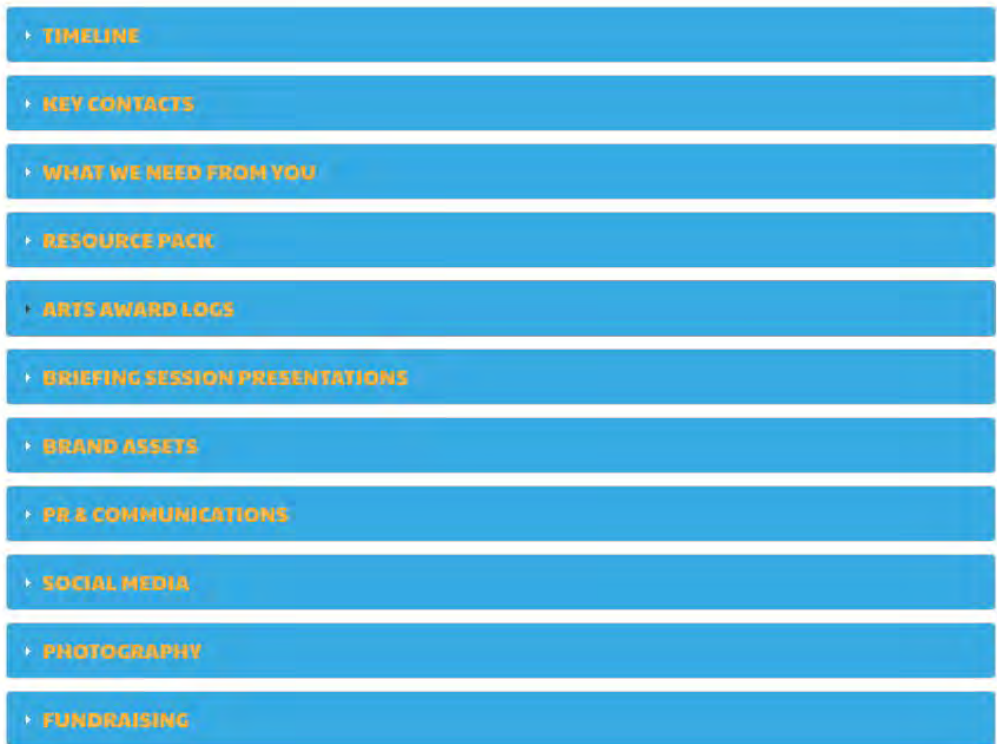
Password

Keep me signed in

[Forgot your password?](#)

Learning Toolkit

- You'll receive an email from Bee in the City with a unique username and request for you to set up a password
- Once this is set up you will have access to this password protected part of the from Bee in the City Website. A one stop shop for all the logos, assets and resources for this project.



- ▶ **TIMELINE**
- ▶ **KEY CONTACTS**
- ▶ **WHAT WE NEED FROM YOU**
- ▶ **RESOURCE PACK**
- ▶ **ARTS AWARD LOGS**
- ▶ **BRIEFING SESSION PRESENTATIONS**
- ▶ **BRAND ASSETS**
- ▶ **PR & COMMUNICATIONS**
- ▶ **SOCIAL MEDIA**
- ▶ **PHOTOGRAPHY**
- ▶ **FUNDRAISING**

Sharing Ideas

- Follow us on Twitter [@beeinthecitymcr](https://twitter.com/beeinthecitymcr) and share your ideas, designs, progress and fundraising activities
- Facebook
<https://www.facebook.com/beeinthecityMCR/>
- Or instagram
<https://www.instagram.com/beeinthecitymcr>
- Website: <http://www.beeinthecitymcr.co.uk/>



For More Information

Please contact:

learning@beeinthecitymcr.co.uk

- Laura McGregor:
Telephone: 07858 349388
- Jana Kennedy:
Telephone: 07812 456852
- Wild in Art Finance enquiries: 01663 308088
- Web: www.beeinthecitymcr.co.uk



How sweet is this event for Manchester?

This exceptional event will:

Be one of the largest mass-participation public art events ever held in Manchester.

Include over

80
sculptures

designed by artists, forming a trail throughout the city



Attract over

1m

visitors across 9 weeks

Engage the business community



Showcase regional and local artists



Generate a media AVE of over

£1m

through national and regional media coverage

Did you know that people who take part in the arts are 38% more likely to report good health?

Cultural Learning Alliance, Key Research Findings: the value of cultural learning, 2017

Raise in the region of

£300k

for The Lord Mayor's We Love MCR Charity



Create social media engagement of over

2m



Generate an estimated economic impact of

£20m

Generate over

5m

interactions via the Bee in the City app

Promote health and wellbeing and get people active



Involve community groups and volunteers



Engage

30,000

school children in a curriculum related learning project

Thank you!
Any questions?





Bee in the City